

Pearl²
SEENGEN



SEEBURG

Pearl²

SEENGEN



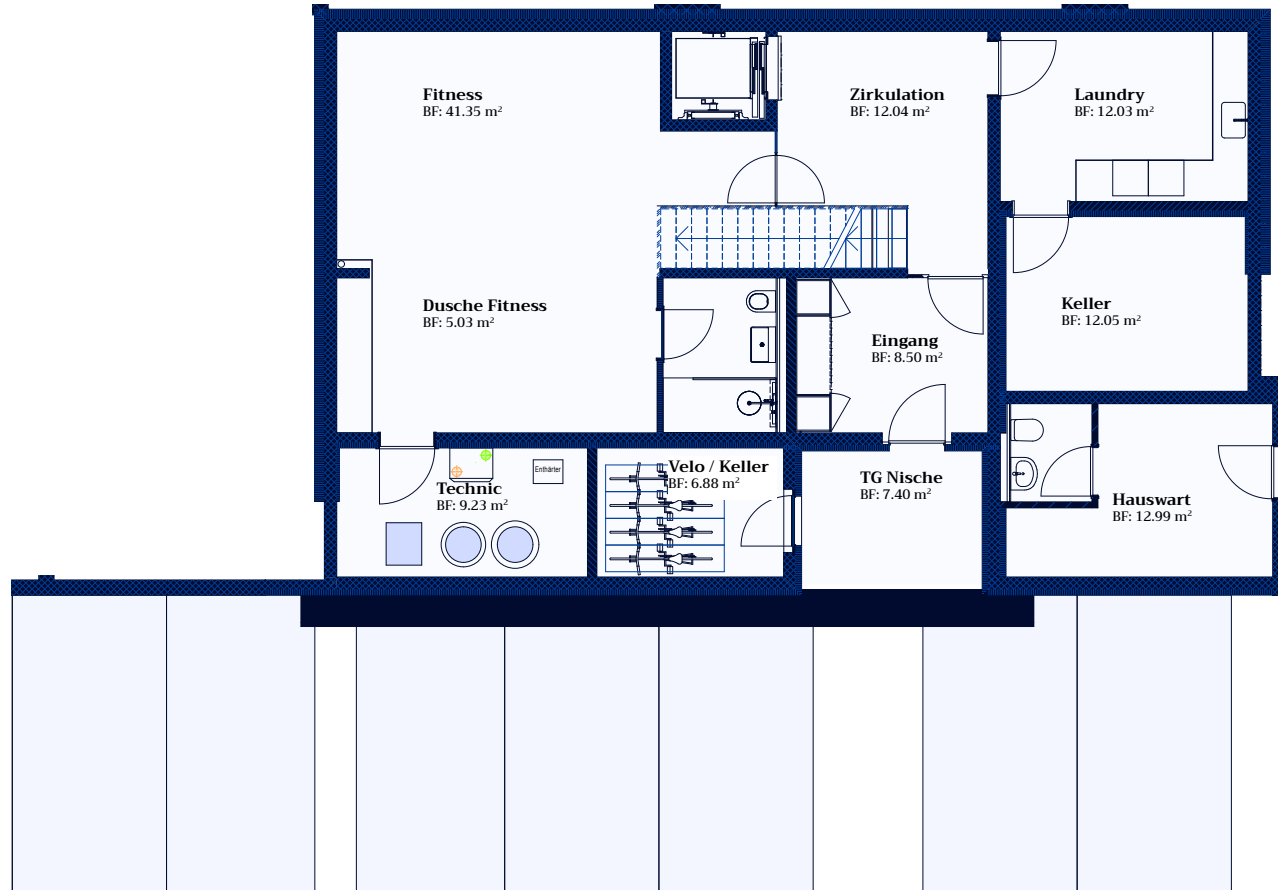
ÜBERSICHT

Zimmer	: 7
Parzelle	: 685 m ²
Wohnfläche (netto)	: 361 m ²
Terrasse	: 293 m ²
Garten	: 480 m ²

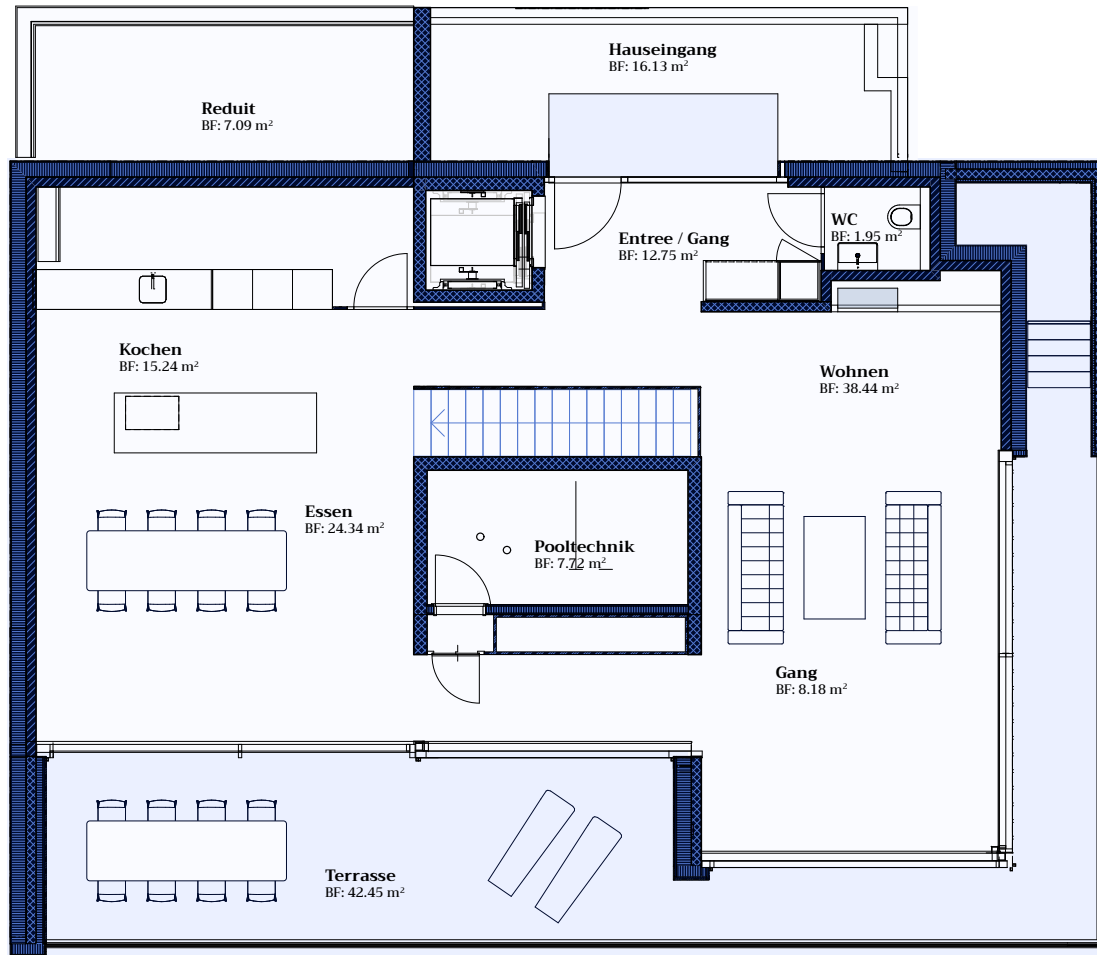
ADRESSE

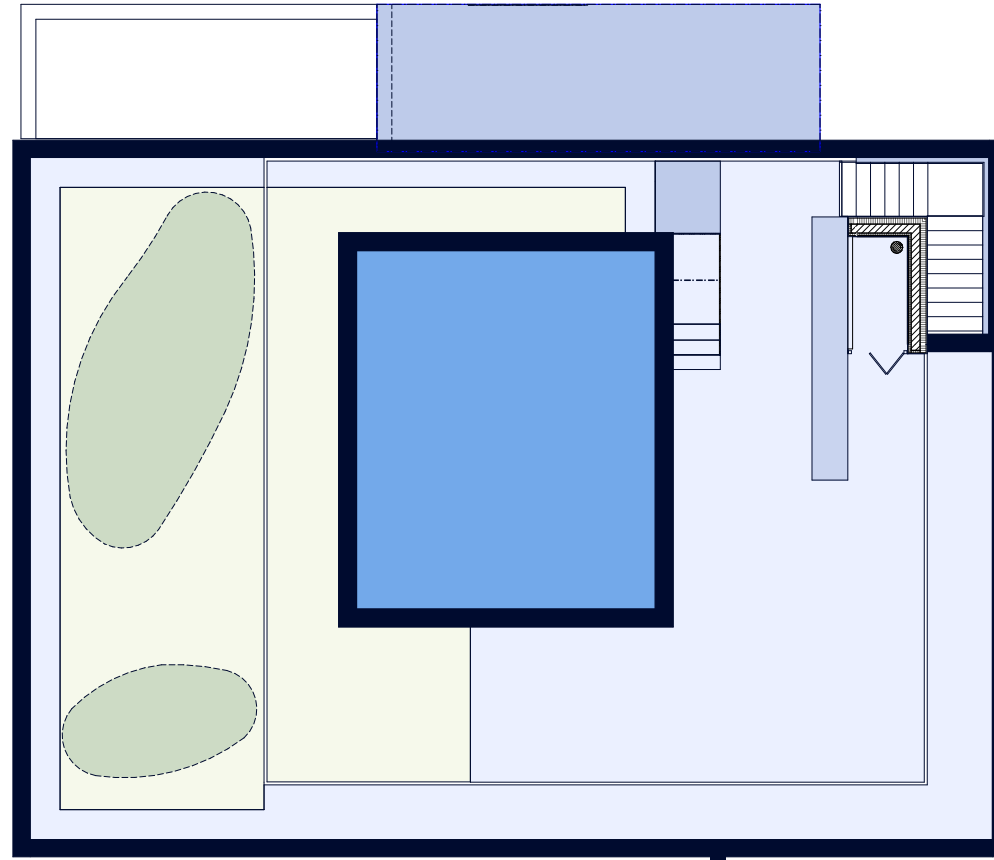
Panoramaweg 5b,
5707 Seengen













Pearl
SEENGEN



SEEBERG

Verkauf und Beratung

Seeberg Services AG

Paradiesgässli 2, 6004 Luzern

T. +41 62 834 50 68

info@sbrg.ch / www.sbrg.ch